

LIMITED WARRANTY

2-year Warranty : Light Unit, Battery Unit, Battery Charger (Excluding degradation of the battery unit)

If trouble or damage occurs during normal use, the product will be repaired or replaced free of charge. Type your name, address, date of purchase and the situation of trouble clearly on the warranty certificate, and send it back to the appropriate service center together with the product. Insurance, handling and transportation charges shall be borne by the customer. After being repaired or replaced, the product will be shipped back to the customer.

CATEYE CO.,LTD.

2-8-25, Kuwazu, Higashi Sumiyoshi-ku,
Osaka 546-0041 Japan
Attn: CATEYE Customer Service Section
Phone : (06)6719-6863
Fax : (06)6719-6033
E-mail : support@cateye.co.jp
URL : http://www.cateye.co.jp

Service & Research Address for USA

CATEYE Service and Research Center
1705 14th St. 115 Boulder, CO 80302
Phone : 303.443.4595
Toll Free: 800.5CATEYE
Fax : 303.473.0006
E-mail : service@cateye.com
URL : http://www.cateye.com

INTRODUCTION

- Before using the light, please thoroughly read this manual and keep it for future reference.

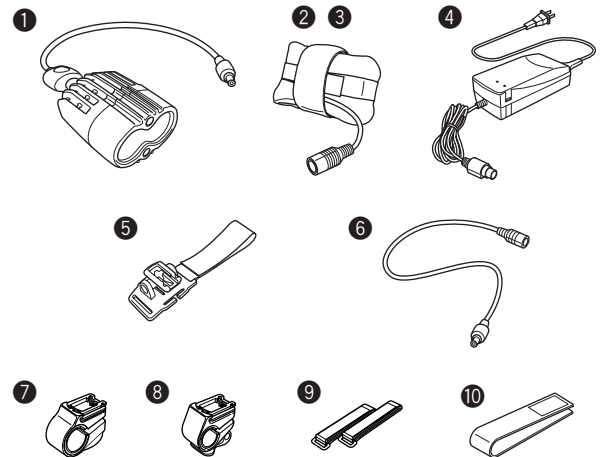
Thank you for purchasing the CATEYE **DOUBLE SHOT HL-EL 710RC**. The Double Shot light uses high-power white LEDs, and has a much longer operating life than other high-power rechargeable systems.

FOR SAFE OPERATION

- Never short-circuit the terminals of the battery unit or the battery charger. It may cause the unit to overheat, resulting in fire or damage to the component.
- Securely connect the plug so that the cable will not come unplugged or hinder your riding.
- Never use damaged components (e.g., cables, etc.). Send any damaged components to our customer service department for repair.
- The light unit may become extremely hot when on or immediately after it is turned off. Please use with caution.
- Do not place it within children's reach.
- We recommend carrying a flashlight or spare battery unit with you in case the main battery dies.
- Charge the battery unit before using because the unit self-discharges over time, decreasing its voltage.
- Do not leave the battery overly discharged because it shortens the operating life of the battery. Try to charge the battery unit after each use. ("Overly discharged" refers to the state the battery is in when used over a period of time while below the specified cutoff voltage.)
- If the lamp body or parts become dirty with mud, etc., clean with a soft cloth which is moistened with mild soap. Never apply paint thinner, benzine or alcohol; damage will result.
- Place the battery unit at least 10 cm away from any wireless meter, as transmitting and receiving performance may be adversely affected.
- Never disassemble the light unit, battery unit, or battery charger.
- This product is water-resistant under normal weather conditions of rain, etc. However, do not intentionally submerge it in water or allow rainwater to enter the battery bag.

Before Initial Use

The battery is shipped with a small charge, that is used to test the unit at the factory. As such, it is necessary to charge the battery before initial use. (Refer to the "How to Charge" section in this manual.)



COMPONENTS

- | | |
|-------------------|---|
| 1 Light Unit | 7/8 H31 for oversized handlebars Bracket / H32 Bracket (With thick and thin rubber pads for each) |
| 2 Battery Unit | 9 Cable Straps (x 2) |
| 3 Battery Bag | 10 Support Strap |
| 4 Battery Charger | |
| 5 Helmet mount | |
| 6 Extension cable | |

MOUNTING THE LIGHT UNIT ON A HELMET

H-1 Installing the helmet mount and light unit

Attach the helmet mount to the helmet.

- Securely fasten the helmet mount to the front part of the helmet, wrapping the velcro strap through the air vents on the helmet.
- Mount the light unit onto the helmet mount.
- Secure the cable on the rear of the helmet using the spare cable strap.

Put on the helmet and adjust the angle of the beam. To remove the light unit, pull the light unit forward while pressing the button on the base of the light unit.

CAUTION! Make sure the light unit is cool to the touch before removing it.

H-2 Connecting the extension cord

Connect the extension cord between the light unit and the battery unit.

Align the male and female cable ends and connect them. Turn the plugs so that they are securely locked.

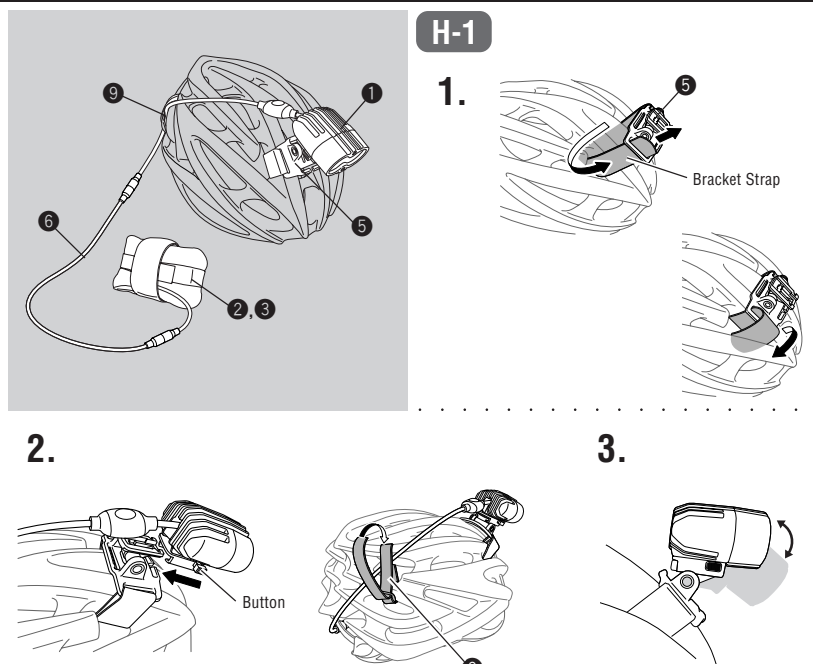
Precautions when handling the battery unit

While riding, place the battery unit in your jersey pocket or hydration/back pack.

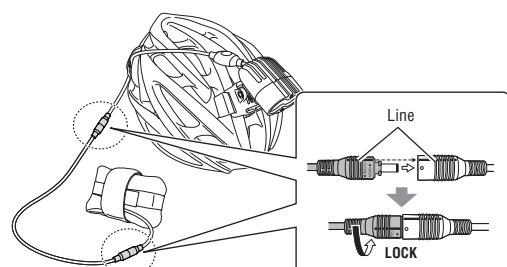
Before using the light, make sure the battery is correctly stored in its neoprene bag.

CAUTION! Pay attention to the arrangement of the cable so that it does not interfere with the handling of the bicycle. Do not wind the cable because the wire inside the cable may break.

NOTE: Wind the fixing strap around the center of the battery unit.



H-2



HOW TO MOUNT TO A BICYCLE

B-1 Installing the bracket/light unit

Attach bracket H31 or H32 to the handlebar.

NOTE: Select H31 for oversized handlebars.

1. Mount a rubber pad and the bracket onto the handlebar. 2 thicknesses of rubber pads are supplied; if necessary, cut the rubber pad to fit.
2. Tighten and then close the lever to secure it. Make sure the bracket does not rotate on the handlebar.

CAUTION! Be sure to adjust the angle of the light's beam by referring to the "How to Adjust Beam Angle" section in this manual before operating the lighting system.

3. Mount the light unit onto the bracket.

To remove unit after use, pull it out while pressing the button on the bracket.

CAUTION! Make sure the light unit is cool to the touch before removing it.

B-2 Installing Battery Unit

Mount the battery unit on the bicycle frame.

Before using the light, make sure the battery is correctly stored in its neoprene bag.

CAUTION! When mounting the unit, make sure that the seam of the battery bag is facing down and the fold line is in front. Wind the fixing strap around the center of the battery unit.

1. Wrap the fixing strap around the top tube to secure the unit.

CAUTION! Wrap the strap over the top tube but under the gear and brake cables. Wrapping the strap over the cables is dangerous as it may interfere with braking and gear shifting.

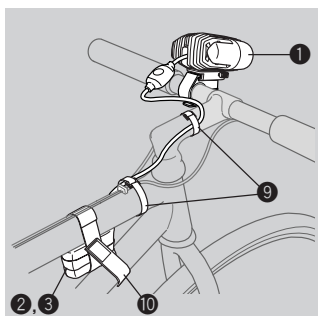
2. Use the support strap to secure the battery unit to the down tube to prevent it from rolling.

NOTE: The battery can also be mounted on alternate positions on the bicycle. However, please make sure that the seam of the battery bag is facing down, and the fold line is in front. This will help prevent any water from entering the bag.

B-3 Connecting and Securing Cables

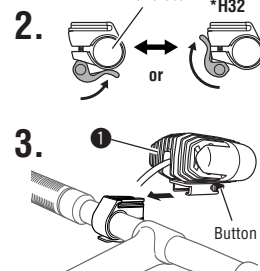
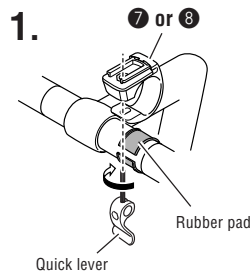
Align the male and female cable ends and connect them. Turn the plugs so that they are securely locked. Fix the cables to your frame and/or stem to keep them secured.

CAUTION! Pay attention to the arrangement of the cable so that it does not interfere with the handling of the bicycle. Do not secure the cable at an acute angle because the wire inside the cable may break.



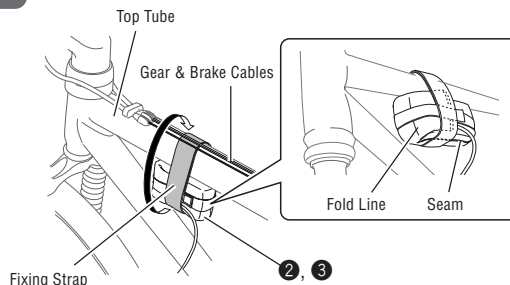
B-1

1.

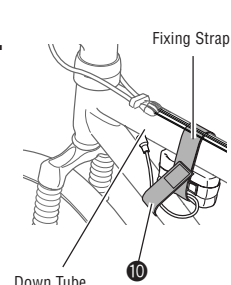


B-2

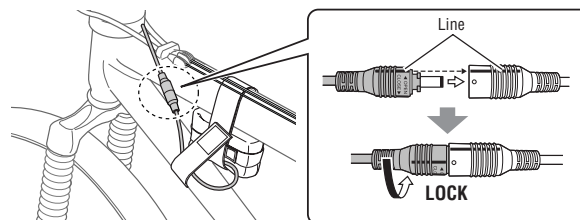
1.



2.



B-3



HOW TO USE

A Switching on/off

To switch the light on/off, press the button directly behind the light unit.

Run time

Approx. 5 hours

B How to Adjust Beam Angle

If the light unit is mounted on the bicycle, adjust the beam angle so as not to blind oncoming traffic.

C How to Charge Battery Unit

Important!

- Be sure to use only the supplied battery charger. This charger can accept 100-240 volts.
- Do not completely remove the battery unit from the battery bag.
- After charging, return the battery to its original storage state. Do not allow water to enter the battery bag.
- The standard charging time and run time are guideline values and depend on the operating environment.
- If the battery unit repeatedly does not meet the proper run time even though it is fully charged, it might be at the end of its operating life. Replace the old battery unit with a new one. The used battery unit should be disposed of properly according to local regulations.

Standard charging time

Approx. 3 hours

Charging indicator state

Orange Light : Connected to power source
Blinking Red Light : Charging
Green Light : Charging is completed

1. Remove the support strap from the battery bag and open the bag.

2. Connect the jack to the battery charger.

3. Plug the battery charger to an AC outlet.

NOTE: When charging is complete, the indicator light changes from flashing red to green.

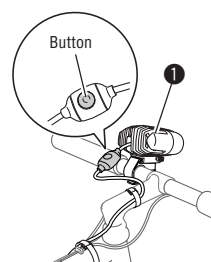
4. When charging is complete, unplug the charging adapter. Refer to the diagrams on the left to rearrange the cable and use the seal strap to tightly close the opening.

CAUTION! When securing the battery to the frame, make sure the fixing strap attaches to the center of the battery unit.

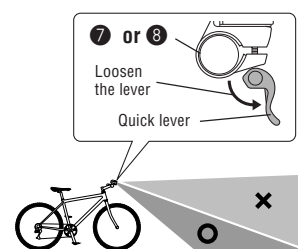
How to Store Battery Unit

The battery unit is stored in its bag as shown in the figure. In case the battery unit is out of its bag, be sure to return it to its original state. Failure to follow these instructions may result in rainwater entering the battery bag, leading to problems with the unit.

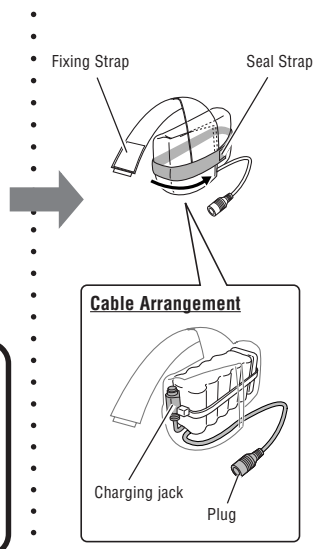
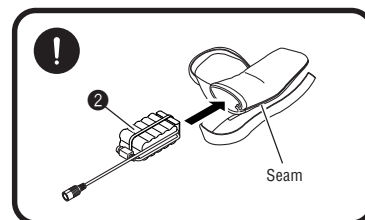
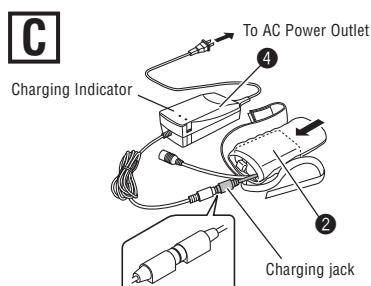
A



B



C



SPECIFICATIONS

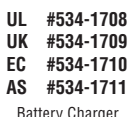
Light Source	Two High-Power White LEDs	Operating Time	Approx. 5 hours
Battery Unit	Nickel hydride battery (Ni-MH/12V 2700mAh)	Standard charging time	Approx. 3 hours
Battery Charger	CHR-2700(AC100V-240V 50/60Hz 0.5A)	Temperature range	Charging: -10°C - 40°C Operating: -15°C - 45°C
		Recharge/discharge number of times	About 300 times (until the rated capacity drops to 50%)

* The specifications and design are subject to change without notice.

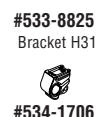
SPARE PARTS



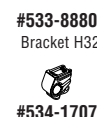
#534-1830
Light Unit



UL #534-1708
UK #534-1709
EC #534-1710
AS #534-1711
Battery Charger



#533-8825
Bracket H31



#533-8880
Bracket H32



#534-1831
Helmet mount



#534-1706
Battery Unit/
Battery Bag



#534-1707
Battery Bag Set



#534-1832
Extension cable